

# ProScreen<sup>®</sup>

DRUGS OF ABUSE DIP CARD



The USDiagnosics ProScreen drug test dip card is a proven, quality product that gives you fewer positive results from common medications. Custom configurations are available to test for up to 12 different drugs... and, its made in the USA!

Test lines develop quickly - in most cases in less than 2 minutes - and are highly visible and easy to read. And of course, the USDiagnosics ProScreen Dip Card is deisgned with flood-proof technology for easier use.

## ProScreen Dip Features

- Convenient, Flood-Proof Design
- Made In The USA
- Test for up to 12 Drugs
- Optional Test for Adulterants
- Built-in Test for Adulterants Available
- Fewer False Positive Results from Common Medications

### ProScreen Dip Tests Available For:

Marijuana	(THC)	Methamphetamine	(MET)	Oxycodone	(OXY)
Cocaine	(COC)	Barbiturates	(BAR)	Tricyclic Antidepressants	(TCA)
Opiates 300	(MOP)	Benzodiazepines	(BZO)	Ecstasy	(MDMA)
Opiates 2000	(OPI)	Phencyclidine	(PCP)	Buprenorphine	(BUP)
Amphetamine	(AMP)	Methadone	(MTD)	Propoxyphene	(PPX)

# The Basics of Using a ProScreen Dip Card

## Step 1

Have the donor provide a specimen and return the cup to the collector. Check the temperature strip to assure valid specimen.

If the dip test is equipped with an optional adulterant test strip, please proceed to Step 1B prior to step 2.



## Step 1B

If the test strip has adulterant pads, compare card pad colors to the colors on the interpretation chart to determine if the specimen has been altered or diluted. If the card pads are not within the normal range, collect another specimen and test with a 2nd card.

ADULTERATION COLOR COMPARISON CHART			
TEST AND READING TIME	ABNORMAL (LOW)	NORMAL	ABNORMAL (HIGH)
Creatinine (Cr) 45 seconds	Light pink	Dark pink	Red
Nitrite (Ni) 45 seconds	Light yellow	Yellow	Dark yellow
pH Immediate	Light blue	Blue	Dark blue
Bleach (BI) 45 seconds	Light blue	Blue	Dark blue
Specific Gravity (S.G.) 60 seconds	Light blue	Blue	Dark blue

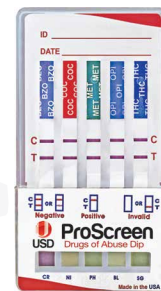
## Step 2

Remove cap from card and dip the card into the specimen. Wait until test strip windows begin to turn pink.



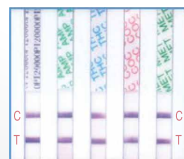
## Step 3

Remove card from specimen and replace cap. Lay dip card on flat surface and allow strips to run. Negative results ready in 2 minutes, non-negative in 5 minutes.



## Reading the Results

Read the results when all upper "Control" or "C" lines have appeared. Negative results can be read as soon as all "Test" or "T" lines are visible. (Wait 5 minutes to determine a non-negative result)



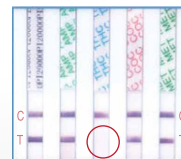
### Negative

A negative result is indicated by the presence of the lower "Test" or "T" Line for each designated drug.



### Negative

The presence of even a very light "Test" or "T" Line indicates a negative result.



### Positive

A positive result is indicated by the absence of the lower "Test" or "T" Line for a specific drug. Wait 5 minutes to determine a positive result.



### Invalid

An invalid result is indicated by the absence of the upper "Control" or "C" Line and the lower "Test" or "T" Line for a specific drug. If this occurs run a second test.