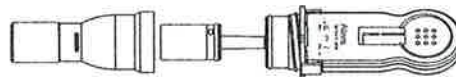


Sample Collection

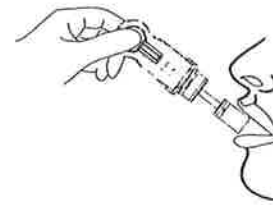
- 1 • Instruct the donor not to place anything in the mouth including food, drink, gum or tobacco products for at least 10 minutes prior to collection.



- 2 • Remove Sample Collector Protector.



- 3 • Insert Sponge end of collector into mouth. • Actively swab the inside of the mouth and tongue with Sponge. As soon as the Sponge softens slightly, gently press the Sponge between the tongue and teeth to ensure **complete saturation**. The Sponge is saturated when no hard spots can be felt. Collect for at least three (3) minutes before removing Sponge. • Hand the saturated collector over to the tester.

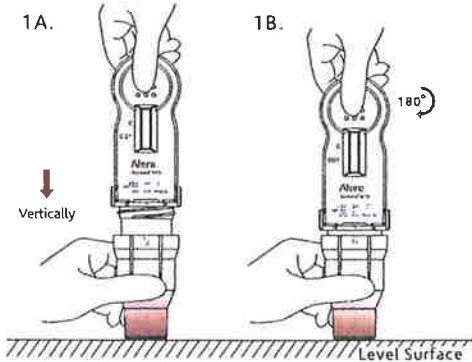


Testing

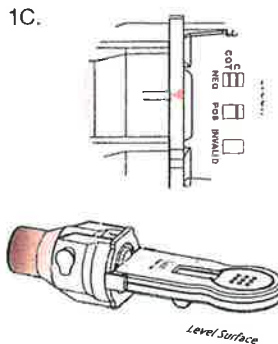
- 1 A. Insert the collector vertically into the Cap and press down firmly until the Cap reaches the thread. B. Twist the Handle clockwise 180° to tighten the Cap until the Red Arrow lines up with the other White Mark. C. Place the test device horizontally on a clean and level surface with the result window facing up.



Incorrect



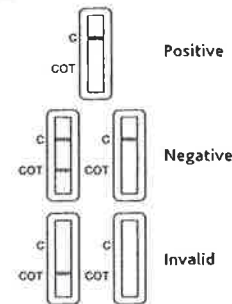
Correct



- 2 • Read results at 10 minutes.

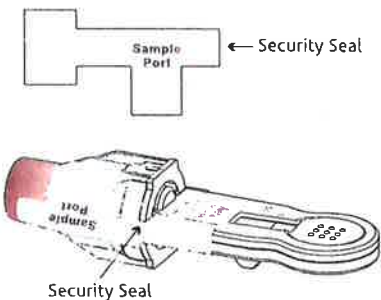


Read the drug strip results at 10 minutes. Test results stable up to 60 minutes.



- All positive results are presumptive and should be confirmed by an alternate method. The preferred confirmatory method is GC/MS or GC/MS/MS.

- 3 • If results are positive, secure Cap with Security Seal and send to laboratory for confirmation.



Manufactured for Alere Toxicology Services - Products Division
Portsmouth, VA 23704 USA
© 2011 Alere. All rights reserved.
The Alere Logo, Alere and iScreen are trademarks of the Alere group of companies.